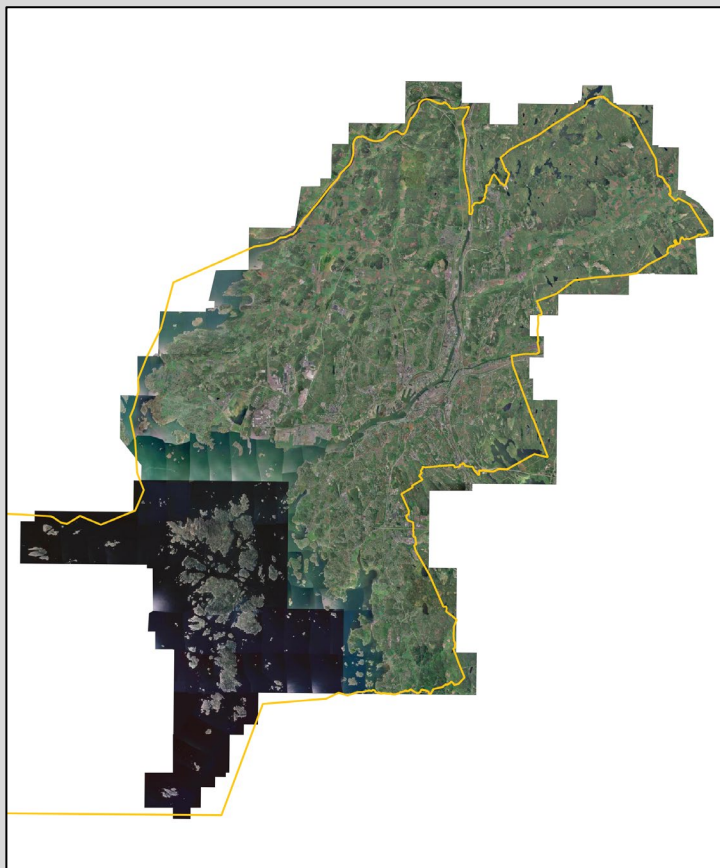


Ortofoto 2003



Product:	Ortofoto 2003
Date of photography:	2003
Resolution:	0.25 m/pixel
Geographic coverage:	Complete Göteborg
Image format:	GeoTIFF with LZW compression
Image tiling:	1x1 km
Coordinate system:	SWEREF 99 12 00 (EPSG: 3007)
Data owner:	Göteborgs Stad
Licence:	Creative Commons, CC0
Contact:	Göteborgs Stad Stadsbyggnadsförvaltningen Tel: +46 31 – 368 19 60

Contents

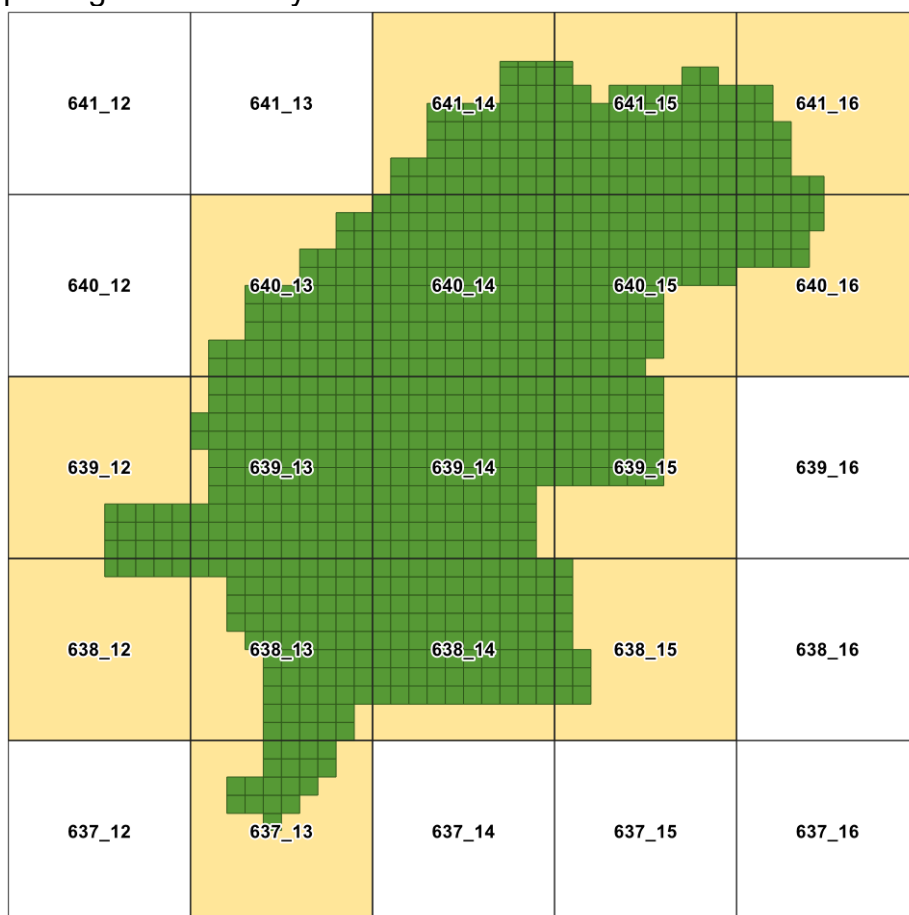
The product is delivered as images and metadata compressed to downloadable zip files. Images are grouped by 10x10 km squares according to the SWEREF 99 12 00 grid.

In order to describe the dataset, two shapefiles are provided:

- index_2003.shp (index of the dataset's image files, shape file)
- mask_2003.shp (mask of the dataset's geographic coverage)

Index of images and packages

Green color shows the geographic index of the dataset. Yellow color shows the index of packages for delivery.



Download instructions

1. Identify and download desired zip files.
2. Create a destination catalog.
3. Unzip all zip files to the destination catalog.

It is not necessary to download all zip files. However, after download, the image files need to be found in the corresponding subfolders in order to have proper index file links.

Image properties

Format:	GeoTIFF
Band:	3 (RGB)
Color depth:	8 bits per band
Data type:	Byte
Coordinate system:	SWEREF 99 12 00
Resolution:	0.25 m/pixel
Compression:	LZW
Image size:	4000 x 4000 pixels
Image area:	1x1 km
Block:	256 x 256
Nodata Value:	0
Alpha band:	No
Georeferencing:	Yes
World file:	TFW
Comments:	Coordinate system and georeferencing are stored in the header of the GeoTIFF file. World files are complementary.

Data acquisition

Season:	-
Date of photography:	-
Aircraft:	-
Image overlap:	-
Sun angle:	-
Flying altitude:	-
Camera:	-

Change log

Version	Datum	Description
1.0	2019-11-14	Document created.
1.1	2023-01-18	Updatated